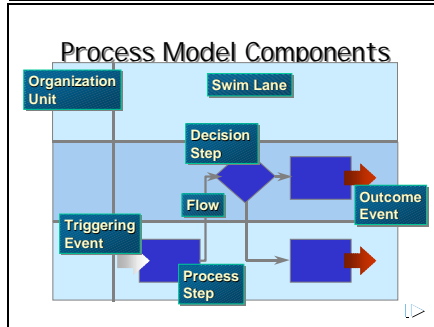


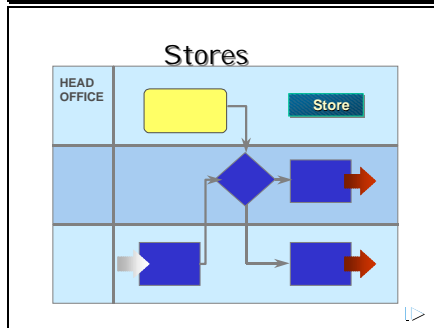
Slide 1

Secrets of the Process Modeler

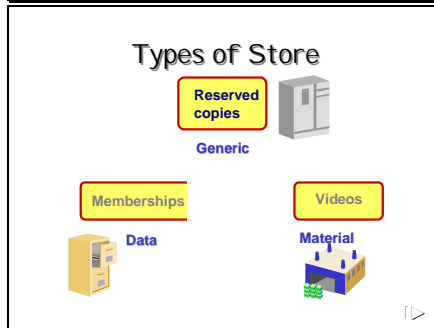
Slide 2



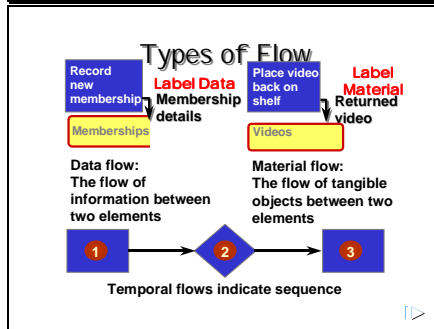
Slide 3



Slide 4



Slide 5



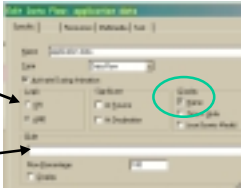
Slide 6

Flow Dialog Box

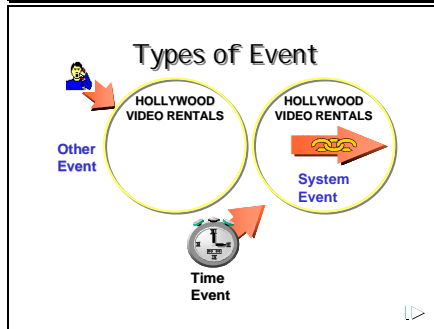
Doubleclick flow to get dialog box

When does destination activate?

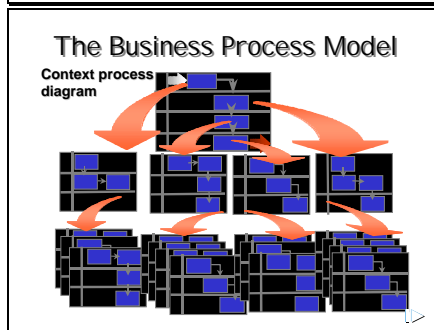
Rule that causes this flow to be followed



Slide 7



Slide 8



Slide 9

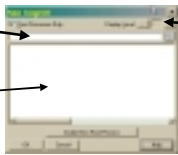
Starting a Brand New Model

Filter for searching for process

Existing Processes Shown Here

Down to Level Indicated Here

No Processes Have Been Defined

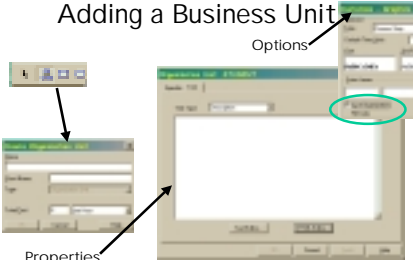


Slide 10

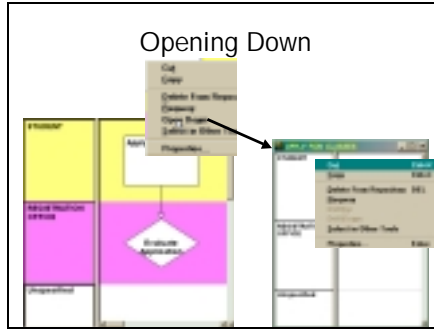
Adding a Business Unit

Options

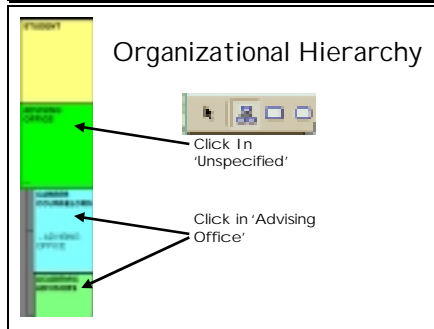
Properties dialog



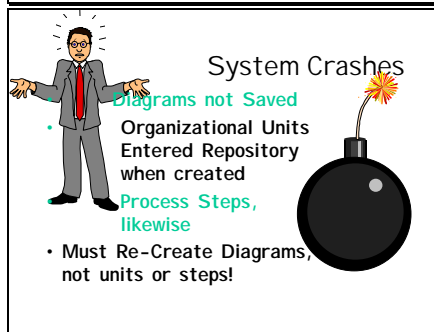
Slide 11



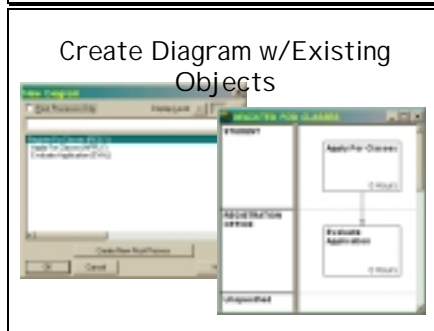
Slide 12



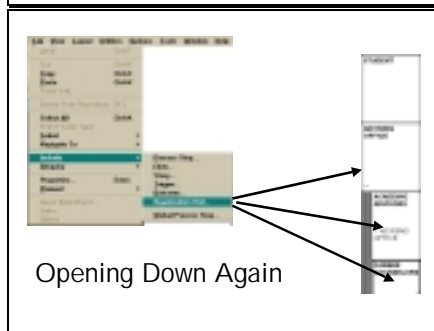
Slide 13



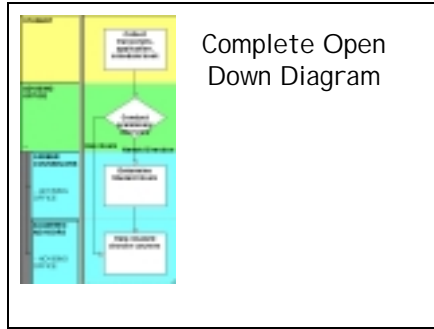
Slide 14



Slide 15



Slide 16



Slide 17

- ### Important Points
- Documentation Vs. Automation
 - Types of Event, Flow, Store
 - Description and Notes
 - Object Creation Vs. Diagram Creation
 - Create Vs. Include
 - Opening Down Process Hierarchy
 - Organizational Hierarchy