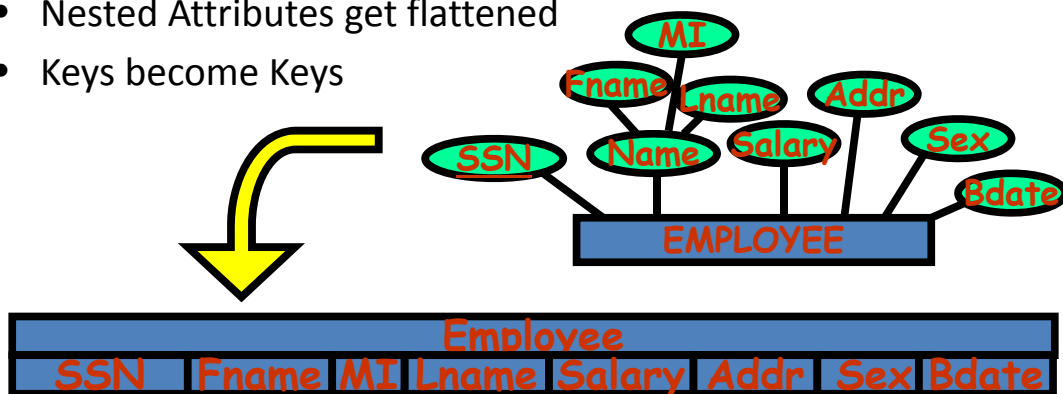


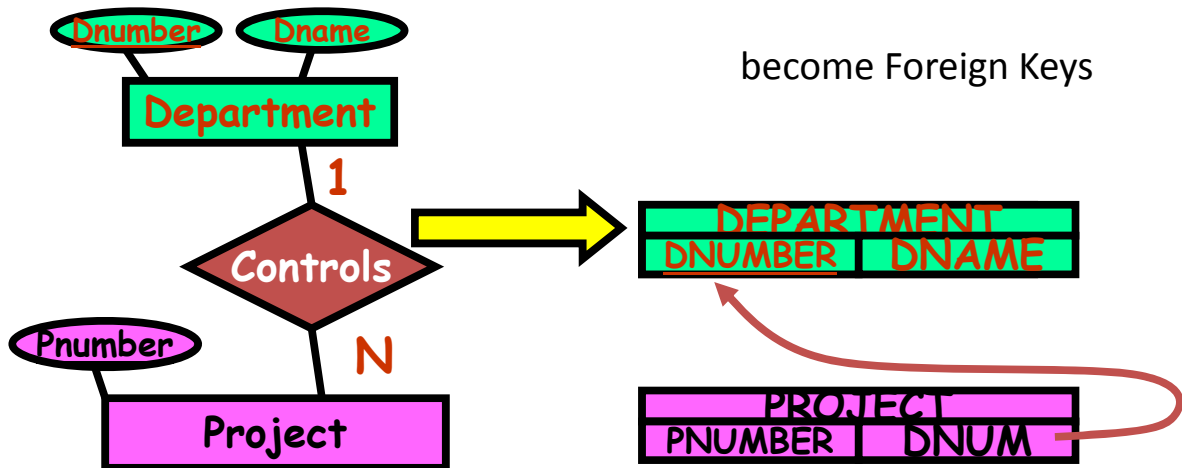
Converting ERDs to Database Schemas

Entity Types

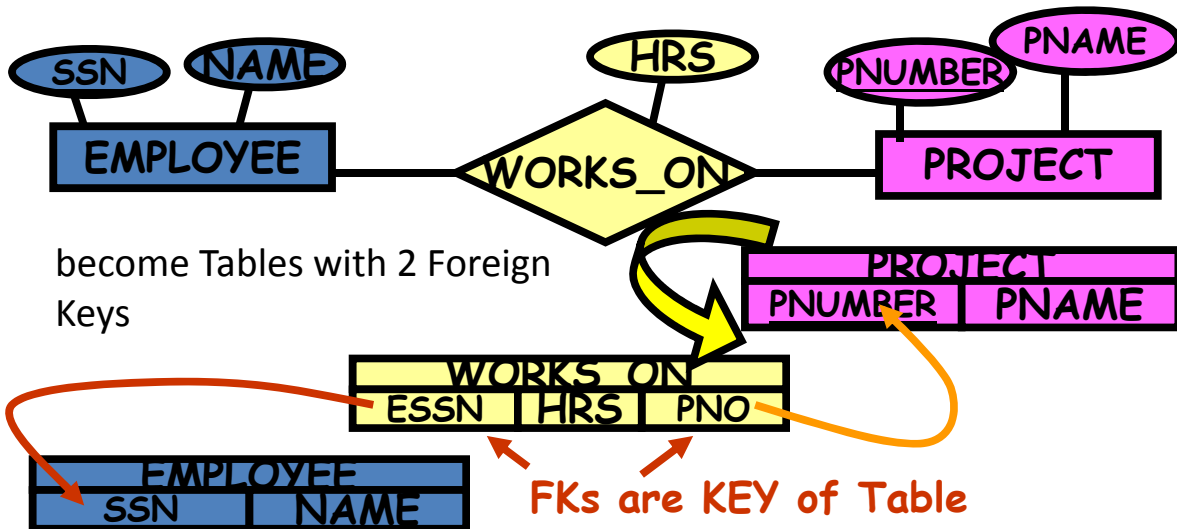
- Become Tables
- Nested Attributes get flattened
- Keys become Keys



1:N Relationship Types

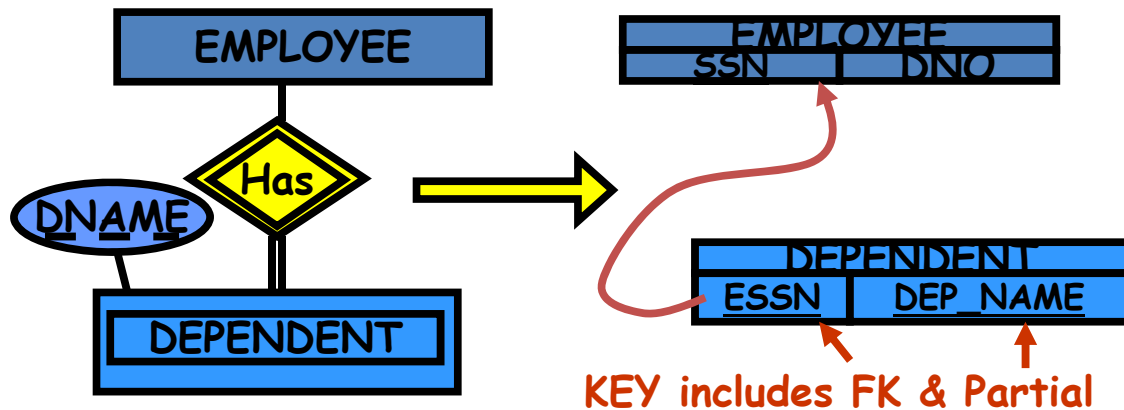


M:N Relationship Types



Weak Entities & Defining Relationships

- Treated like Regular Entities and Relationships



Multivalued Attributes

- Become Tables with Foreign Keys

