

# Build Managers

Steven J Zeil

February 21, 2013

## Contents

|          |  |          |
|----------|--|----------|
| <b>1</b> | <b>Build Managers</b>                    | <b>3</b> |
| <b>2</b> | <b>Some Sample Project Builds</b>        | <b>4</b> |
| 2.1      | Student Programming Assignment . . . . . | 5        |
| 2.2      | Code Annotation Tool . . . . .           | 6        |
| 2.3      | Class Assignment Setup . . . . .         | 8        |

|          |  |           |
|----------|--|-----------|
| 2.4      | Posting Slides and Lecture Notes . . . . . | 10        |
| <b>3</b> | <b>Types of Build Managers</b>             | <b>13</b> |
| 3.1      | IDE project managers . . . . .             | 14        |
| 3.2      | Dependency-Based Managers . . . . .        | 15        |
| 3.3      | Task-Based Managers . . . . .              | 16        |



# 1 Build Managers

## Build Managers

A *build manager* is a tool for scripting the automated steps required to produce a software artifact.

.....

## What Should a Build Manager Do?

A good build manager should be

- easy to use
- easy to set up for a given project
- efficient in performing the build
  - avoid redundant/unnecessary actions
  - detect and abort bad builds in progress



- incremental
  - allow focused/partial builds
- flexible
  - allow for a variety of build actions
  - on a variety of platforms
- configurable
  - permit the management of multiple artifact configurations

.....

## 2 Some Sample Project Builds

### Some Sample Project Builds



Here are some of the project builds I have had to automate in the opening weeks of this semester (Spring 2013).

.....

### 2.1 Student Programming Assignment

#### Student Programming Assignment

Set up to allow students to easily compile code for an assignment.

- Build each missing or out-of-date .o file by compiling a corresponding .cpp file.
    - Record which .cpp files and .h files were used during the compilation so that future builds can determine what would future source code changes would make this .o file outdated.
  - Link all .o files to produce an executable
- .....



### 2.2 Code Annotation Tool

#### Code Annotation Tool

The code annotation tool is a program I use to convert C++ and Java code with optional markup comments like this

```
#include <iostream>

using namespace std; /**col*/

int main (int argc, char** argv)
{
    // Let's be friendly
    cout << "Hello world!" << endl;
    /***/return 0;/**-*/
}

.....
```



### Code Annotation Tool Output

...into this or this:

```
#include <iostream>

using namespace std; ❶

int main (int argc, char** argv)
{
    // Let's be friendly
    cout << "Hello world!" << endl;
    return 0;
}
```

.....

### Building the Code Annotation Tool

The steps involved in building this tool are:



1. Run the program **jflex** on each file in `src/main/jflex`, generating a pair of `.java` files that get placed in `src/main/java`
2. Compile the Java files in `src/main/java`, placing the results in `target/classes`
3. Compile the Java files in `src/test/java` (using the `target/classes` compilation results, placing the results in `target/test-classes`.
4. Run the JUnit tests in `target/test-classes`.
5. If all tests pass, package the compiled classes in `target/classes` into a `.jar` file.

It's worth noting how many of the steps in this project build are *not* simply compile and link steps.

.....

## 2.3 Class Assignment Setup

### Class Assignment Setup





In preparing to release a programming assignment to a class, the steps are

1. Setup:

- (a) Copy all of the files that I will provide to students from a `Public` directory into a `Work` directory.
- (b) Copy all of the files from my `Solution` directory into that `Work` directory

2. Build solution

- (a) Compile any `.cpp` files in the `Work` directory
- (b) Link the resulting `.o` files.

3. Run the executable produced in the last step on each `test*.dat` in the `Tests` directory, capturing the output as a corresponding `.out` file.

4. Copy all source code from the `Work` directory into a `winWork` directory.



5. Use a cross-compiler to compile and link the .cpp files in winWork into a Windows executable
6. Install:
  - (a) Copy the two executables and the contents of the Public directory into a release area accessible to students.
  - (b) Set the permissions on the copied files so that they can be accessed.
  - (c) Copy any .html and graphics files for the assignment to the course website.

.....

## 2.4 Posting Slides and Lecture Notes

### Posting Slides and Lecture Notes

The lectures notes for this course are prepared through a process:

1. Setup



- (a) If the directory has a DocBook document and no corresponding TeX file, and if we are on a machine where **db2latex** is installed, run **db2latex** to create a TeX file.
- (b) Convert all graphics to PNG or PDF:
  - i. For each desired document format, copy a corresponding template into this directory, substituting for various course properties (e.g., course name, website URL), saving this as a `.ltx` file.
  - ii. For each GIF file in the directory with no corresponding PNG file, run **convert** to produce a PNG.
  - iii. For each FIG file in the directory with no corresponding EPS file, run **fig2dev** to produce an EPS.
  - iv. For each Dia file in the directory with no corresponding EPS file, run **dia** to export as EPS.
  - v. For each EPS file in the directory with no corresponding PDF file, run **epstopdf** to create a PDF.
- (c) Annotate source code:



- i. For each C++ or Java file with no corresponding HTML file, use the code annotation toll to generate an HTML file.
  - ii. For each C++ or Java file with no corresponding TeX file, use the code annotation toll to generate an TeX file.
2. For each desired document format, run **latexmk** to produce a PDF for that format.
3. Deployment:
  - (a) Synchronize this directory with the corresponding directory of the website, or
  - (b) Prepare a zip file with the contents of this directory that can be uploaded to a remote webserver (e.g., Blackboard).

.....



### 3 Types of Build Managers

#### Why Not Just Write a Script?

We could simply write a simple script to perform each of the steps in sequence...

.....

#### Scripting

But how does this fare according to our earlier build manager goals?

- easy to use? ✓
- easy to set up for a given project? ✗
- efficient in performing the build?
  - avoid redundant/unnecessary actions ✗
  - detect and abort bad builds in progress ?
- incremental?



- allow focused/partial builds ?
- flexible?
  - allow for a variety of build actions ✗
  - on a variety of platforms ✗
- configurable?
  - permit the management of multiple artifact configurations ?

.....

### 3.1 IDE project managers

#### IDE project managers

Most IDEs come with a built-in project manager.

- typically limited to compiling and linking



- maybe some support for packaging

Compare to our sample projects.

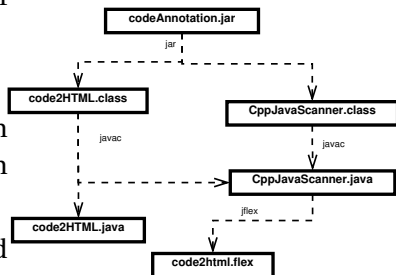
.....

### 3.2 Dependency-Based Managers

#### Dependency-Based Managers

Some build managers are based on the idea of a *dependency graph*:

- Boxes are files.
- Arrows denote dependencies. “A depends on B” means that if B is missing or changed, then A must be (re)generated.
- Labels on arrows indicate the program used to generate the file at the base of the arrow. Analysis of such a graph facilitates



- efficiency - easy to tell what needs to be rebuilt after a change
- incrementality - can determine required build step for any file, not just the “final” one

**make** is the canonical example of a build manager of this type.

.....

### 3.3 Task-Based Managers

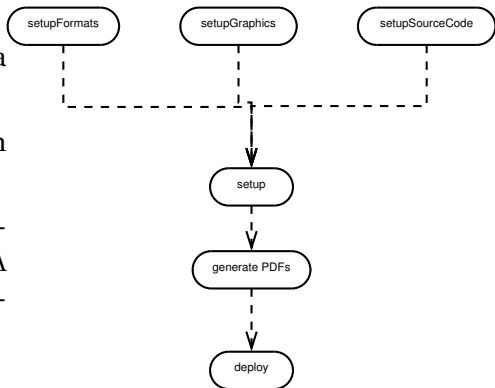
#### Task-Based Managers





Other managers are based on the idea of interdependent tasks.

- Ellipses are tasks (activities). Each task can involve multiple steps.
- Arrows denote success dependencies. “A depends on B” means that A will be run after B and only if task B finished successfully.



This approach facilitates

- easy to set up: usually less detailed than a full file-based dependency graph
- incrementality - can request any intermediate step

**ant** is based on this approach.

.....

